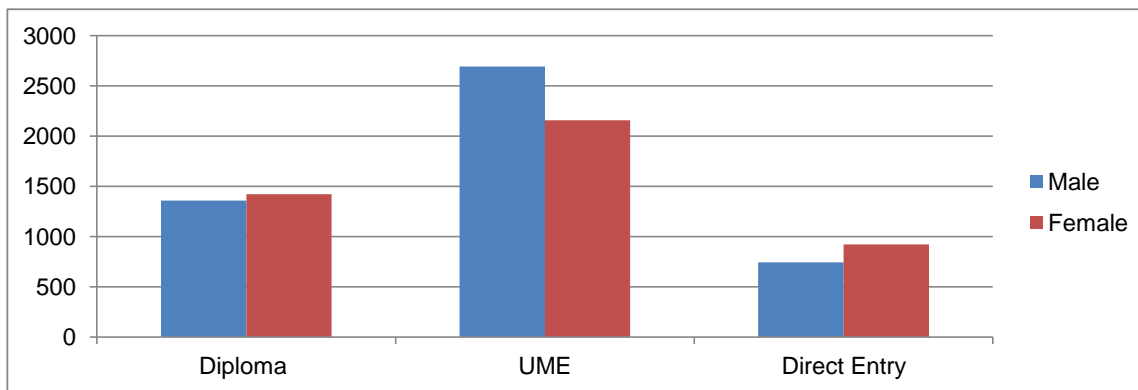




UNIVERSITY OF LAGOS
POCKET STATISTICS
 Academic Session: 2012/2013

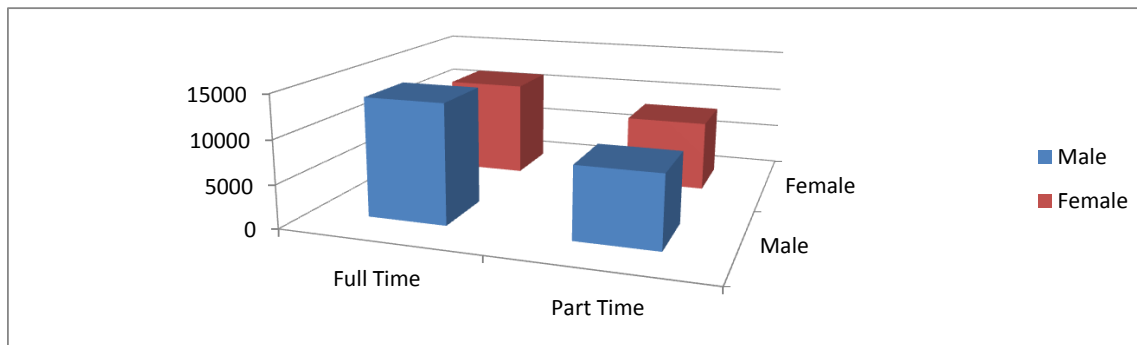
NEW ENTRANTS (FULL TIME STUDENTS) IN 2012/2013

NEW INTAKE	MALE	PERCENTAGE	FEMALE	PERCENTAGE	Total	PERCENTAGE
Diploma	1,358	28.33	1,423	31.61	2,781	29.92
UME	2,692	56.17	2,158	47.93	4,850	52.18
Direct Entry	743	15.50	921	20.46	1,664	17.90
Total	4,793	100.00	4,502	100.00	9,295	100.00



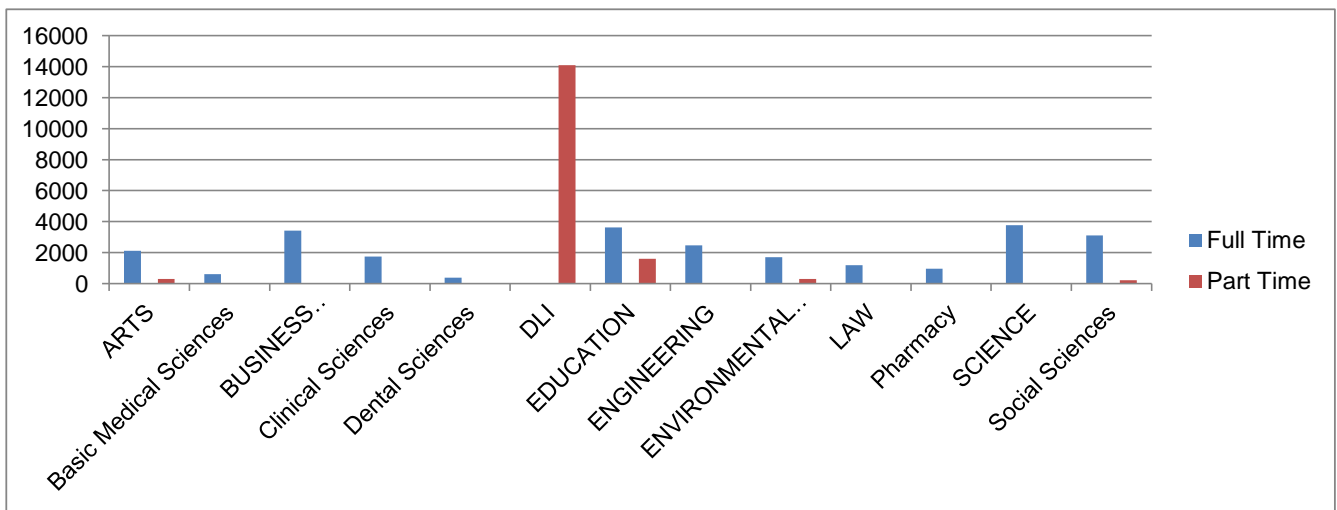
UNDERGRADUATE STUDENTS ENROLMENT BY GENDER (FULL TIME AND PART TIME) IN 2012/2013

GENDER	Full Time	PERCENTAGE	Part Time	PERCENTAGE	Total	PERCENTAGE
Male	13,752	54.80	8,302	50.25	22,109	53.00
Female	11,343	45.20	8,218	49.75	19,606	47.00
Total	25,095	100.00	16,520	100.00	41,715	100.00



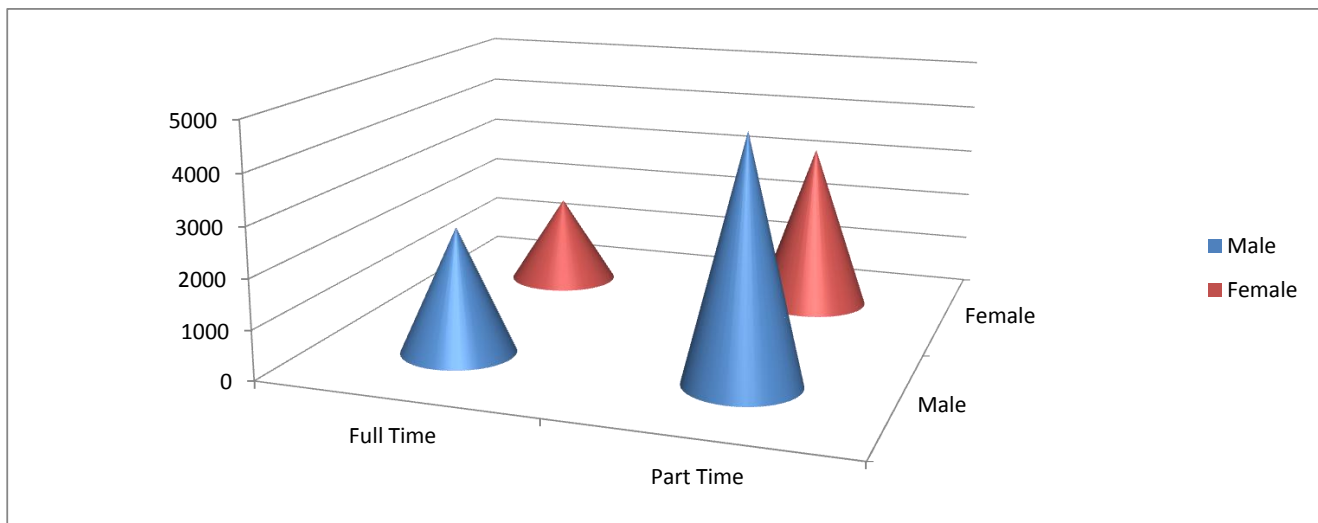
UNDERGRADUATE STUDENTS ENROLMENT BY FACULTY (FULL TIME AND PART TIME) IN 2012/2013

FACULTY	FULL TIME	PART TIME	TOTAL	PERCENTAGE
Arts	2,107	300	2,407	5.78%
Basic Medical Sciences	609	0	609	1.46%
Business Administration	3,417	0	3,417	8.21%
Clinical Sciences	1,740	0	1,740	4.18%
Dental Sciences	392	0	392	0.94%
DLI	0	14,093	14,093	33.87%
Education	3,621	1,599	5,220	12.54%
Engineering	2,465	0	2,465	5.92%
Environmental Sciences	1,707	302	2,009	4.83%
Law	1,196	0	1,196	2.87%
Pharmacy	963	0	963	2.31%
Science	3,769	0	3,769	9.06%
Social Sciences	3,109	226	3,335	8.01%
Total	25,095	16,520	41,615	100.00%



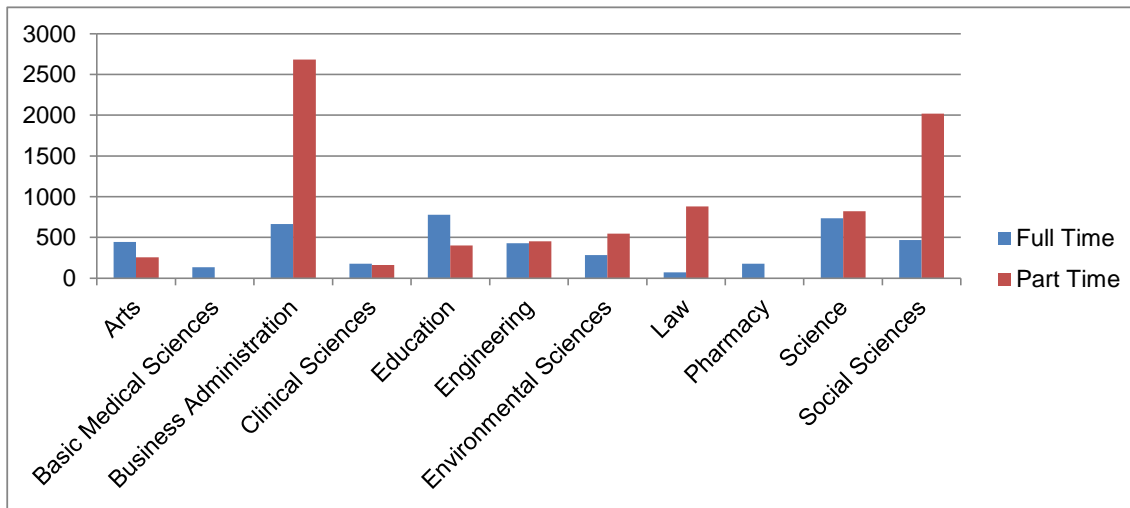
POSTGRADUATE STUDENTS ENROLMENT BY GENDER (FULL TIME AND PART TIME) IN 2012/2013

GENDER	FULL TIME	PART TIME	TOTAL	PERCENTAGE
Male	2,553	4,838	7,391	58.75%
Female	1,808	3,382	5,190	41.25%
Total	4,361	8,220	12,581	100.00%



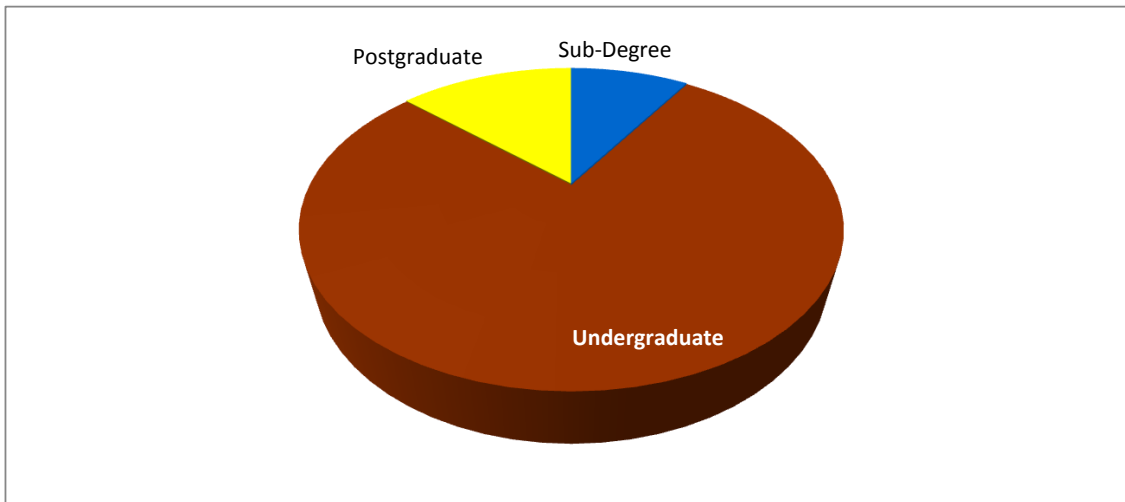
POSTGRADUATE STUDENTS ENROLMENT BY FACULTY (FULL TIME AND PART TIME) IN 2012/2013

FACULTY	FULL TIME	PART TIME	TOTAL	PERCENTAGE
Arts	443	255	698	5.55%
Basic Medical Sciences	133	0	133	1.06%
Business Administration	664	2,683	3,347	26.60%
Clinical Sciences	178	163	341	2.71%
Education	779	400	1,179	9.37%
Engineering	429	450	879	6.99%
Environmental Sciences	283	546	829	6.59%
Law	72	882	954	7.58%
Pharmacy	177	0	177	1.41%
Science	736	821	1,557	12.38%
Social Sciences	467	2,020	2,487	19.77%
Total	4,361	8,220	12,581	100.00%



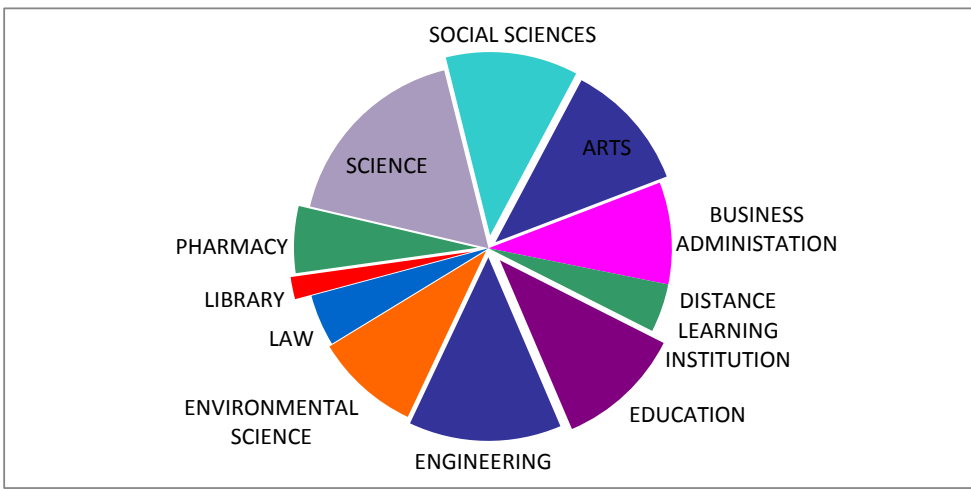
STUDENTS ENROLMENT (FULL TIME) IN 2012/2013

STUDENTS ENROLMENT	TOTAL	PERCENTAGE
Sub-Degree	2,987	9.21%
Undergraduate	25,095	77.35%
Postgraduate	4,361	13.44%
Total	32,443	100.00%



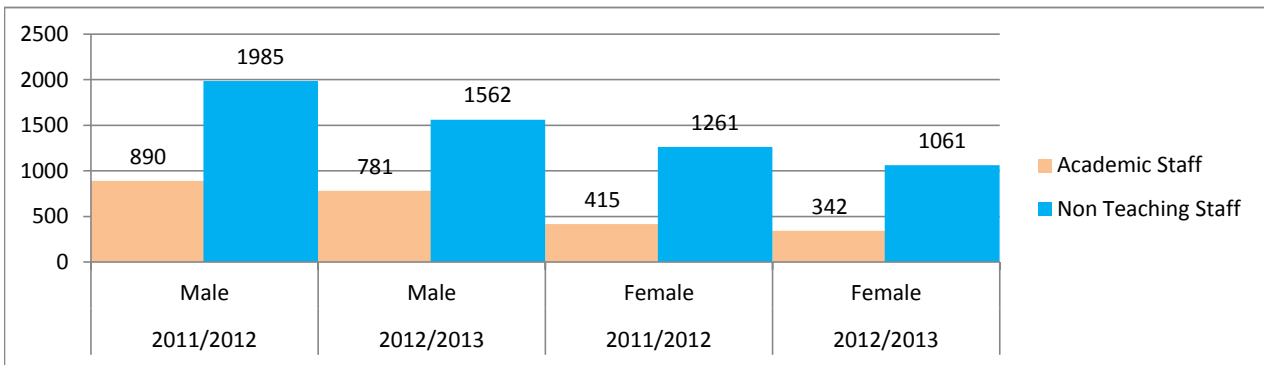
ACADEMIC STAFF BY FACULTY IN 2012/2013

FACULTY	TOTAL	PERCENTAGE
Arts	128	11.40%
Business Administration	101	8.99%
Distance Learning Institute	48	4.27%
Education	125	11.13%
Engineering	151	13.45%
Environmental Sciences	104	9.26%
Law	51	4.54%
Library	22	1.87%
Pharmacy	66	5.88%
Science	196	17.45%
Social Sciences	131	11.67%
Total	1,123	100.00%



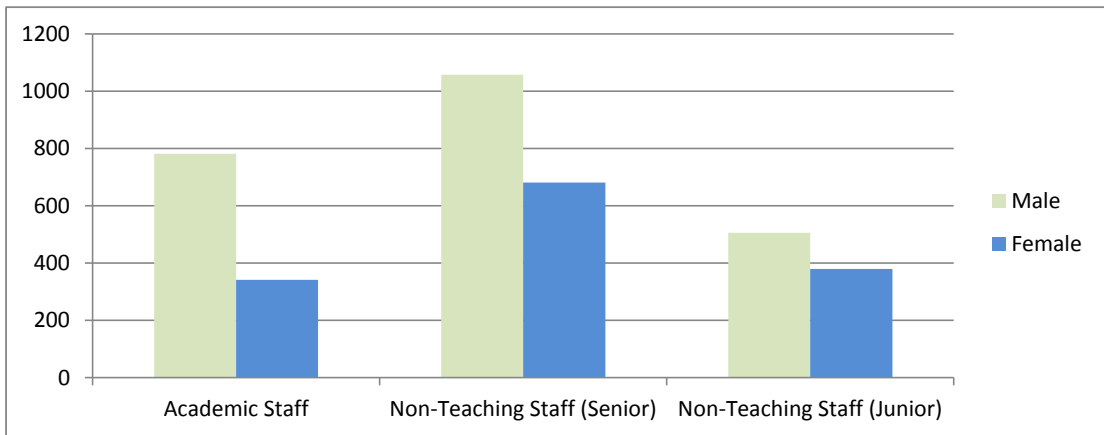
STAFF BY GENDER: 2011/2012 TO 2012/2013 ACADEMIC SESSION

SENIOR STAFF BY GENDER	MALE		FEMALE	
ACADEMIC SESSION	2011/2012	2012/2013	2011/2012	2012/2013
Academic Staff	890	781	415	342
Non Teaching Staff	1,985	1,562	1,261	1,061
Total	2,875	2,343	1,676	1,403

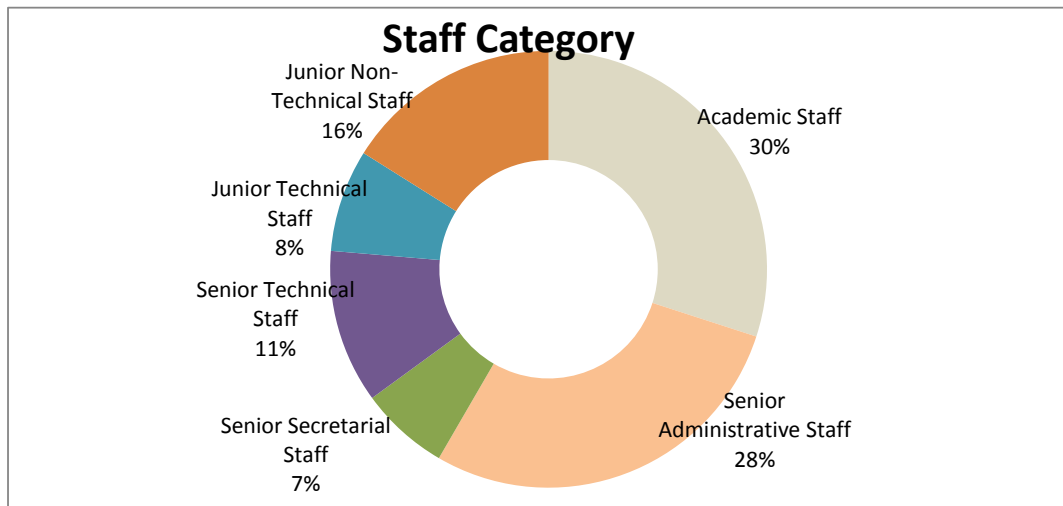


STAFF GENDER IN 2012/2013

STAFF CATEGORY	MALE	PERCENTAGE	FEMALE	PERCENTAGE	TOTAL
Academic Staff	781	33.32%	342	24.38%	1,123
Non-Teaching Staff (Senior)	1,057	45.09%	681	48.54%	1,736
Non-Teaching Staff (Junior)	506	21.59%	380	27.08%	886
Total	2,344	100.00%	1,403	100.00%	3,747

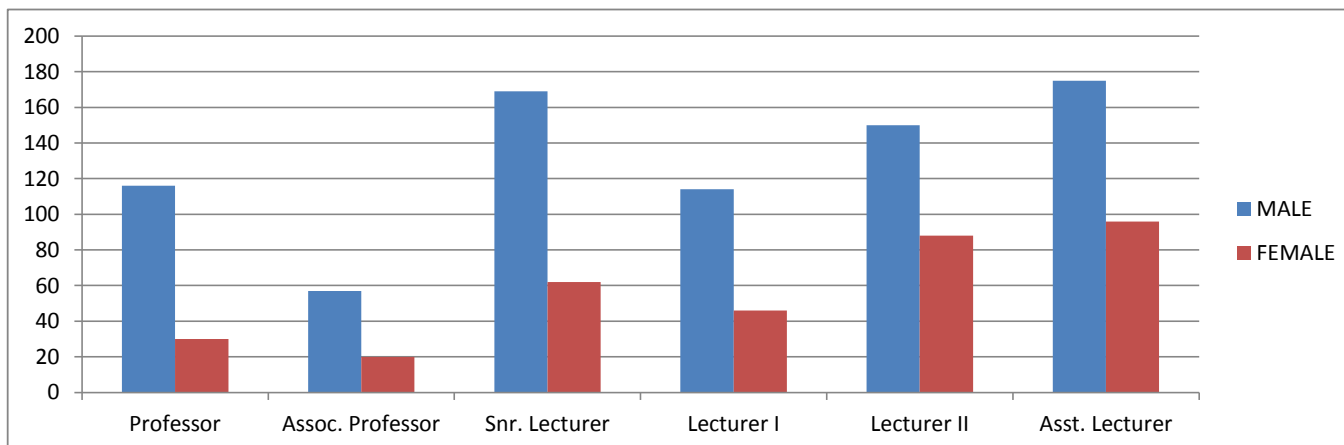


STAFF CATEGORY	TOTAL	PERCENTAGE
Academic Staff	1,123	29.99%
Senior Administrative Staff	1,065	28.38%
Senior Secretarial Staff	247	6.60%
Senior Technical Staff	426	11.38%
Junior Technical Staff	284	7.58%
Junior Non-Technical Staff	602	16.07%
Total	3,747	100%



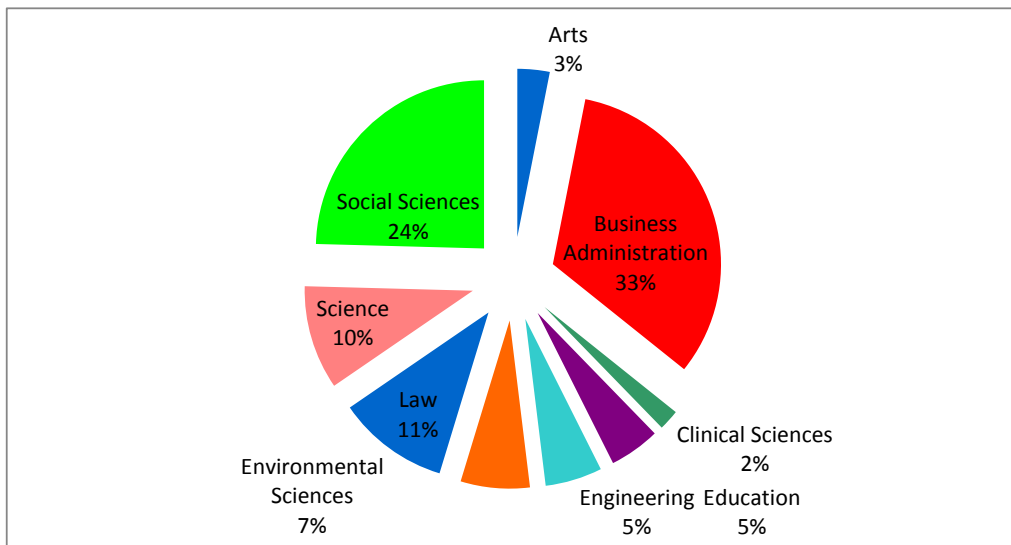
ACADEMIC STAFF BY LEVEL / GENDER IN 2012/2013

	MALE	PERCENTAGE	FEMALE	PERCENTAGE	TOTAL	PERCENTAGE
Professor	116	14.85%	30	8.77%	146	13.00%
Assoc. Professor	57	7.30%	20	5.85%	77	6.86%
Snr. Lecturer	169	21.64%	62	18.13%	231	20.57%
Lecturer I	114	14.60%	46	13.45%	160	14.25%
Lecturer II	150	19.21%	88	25.73%	238	21.19%
Asst. Lecturer	175	22.41%	96	28.07%	271	24.13%
Total	781	100.00%	342	100.00%	1,123	100.00%



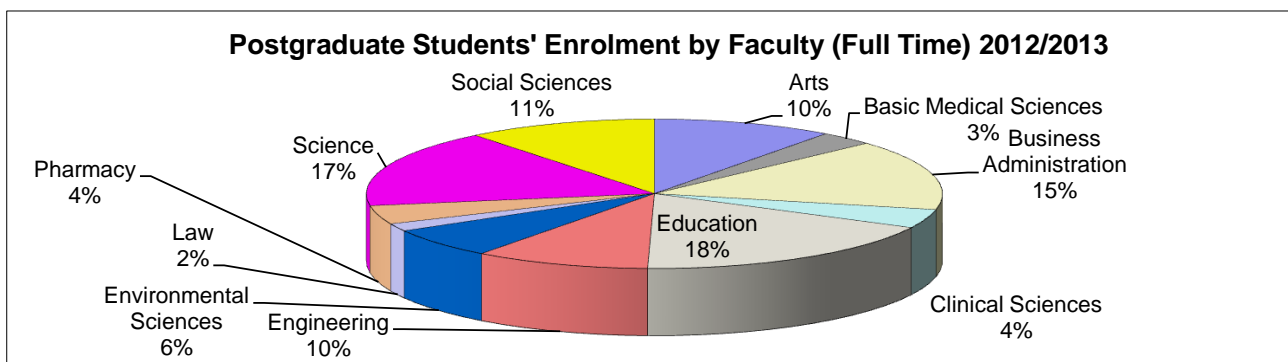
POSTGRADUATE STUDENTS ENROLMENT BY FACULTY (PART TIME) IN 2012/2013

FACULTY	TOTAL	PERCENTAGE
Arts	255	3.10%
Business Administration	2,683	32.64%
Clinical Sciences	163	1.98%
Education	400	4.87%
Engineering	450	5.47%
Environmental Sciences	546	6.64%
Law	882	10.73%
Science	821	9.99%
Social Sciences	2,020	24.57%
Total	8,220	100%



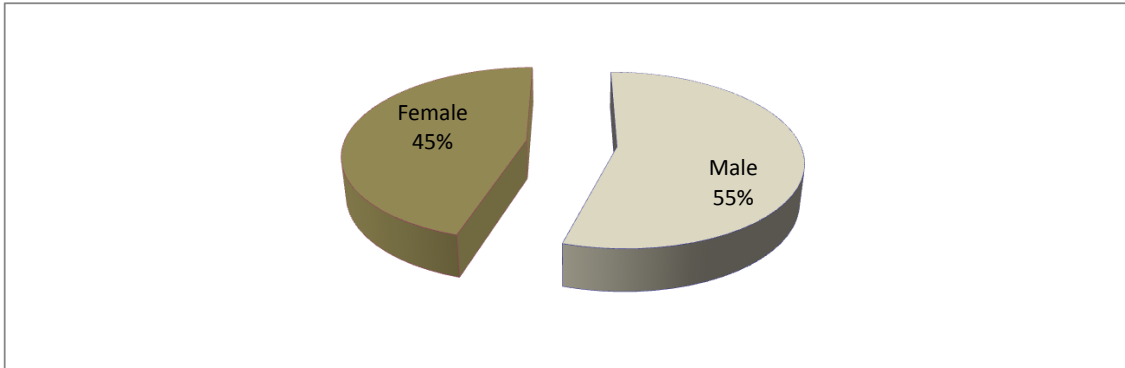
POSTGRADUATE STUDENTS ENROLMENT BY FACULTY (FULL TIME) IN 2012/2013

FACULTY	HEADCOUNT	PERCENTAGE
Arts	443	10.16%
Basic Medical Sciences	133	3.05%
Business Administration	664	15.23%
Clinical Sciences	178	4.08%
Education	779	17.86%
Engineering	429	9.84%
Environmental Sciences	283	6.49%
Law	72	1.65%
Pharmacy	177	4.06%
Science	736	16.88%
Social Sciences	467	10.71%
Total	4,361	100%



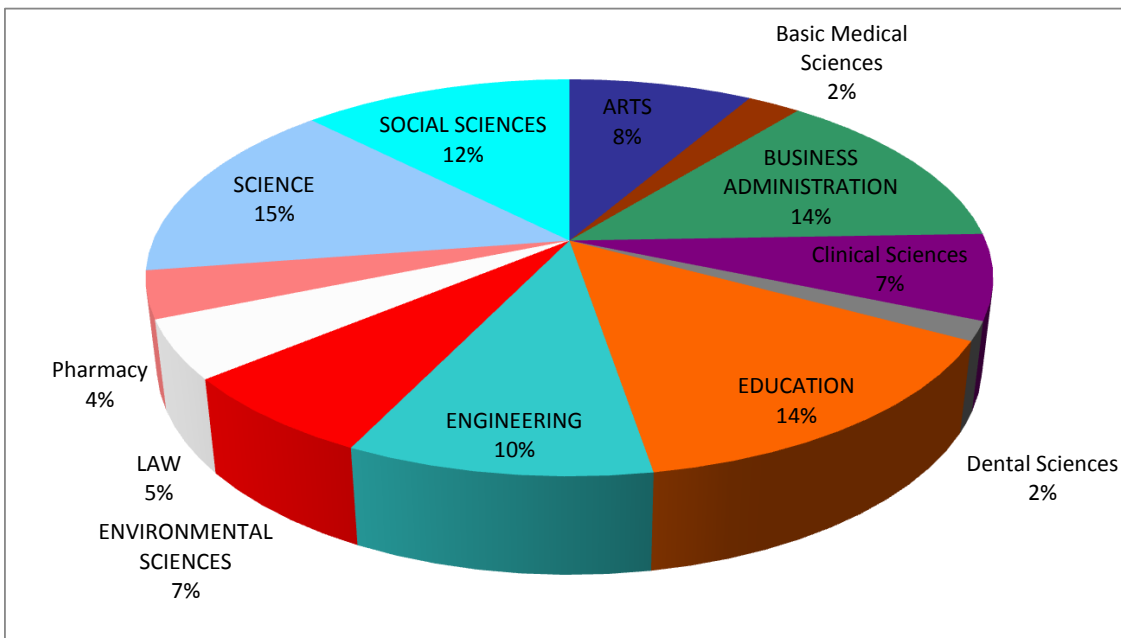
UNDERGRADUATE STUDENTS ENROLMENT BY GENDER (FULL TIME) IN 2012/2013

GENDER	TOTAL	PERCENTAGE
Male	13,752	54.80%
Female	11,343	45.20%
Total	25,095	100.00%



UNDERGRADUATE STUDENTS ENROLMENT BY FACULTY (FULL TIME) IN 2012/2013

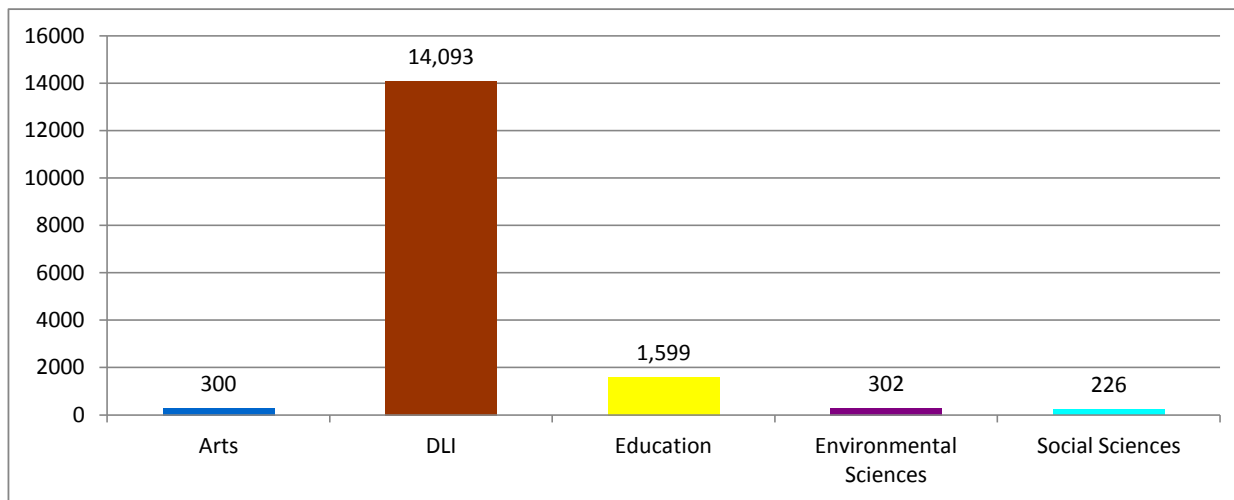
FACULTY	TOTAL	PERCENTAGE
Arts	2,107	8.40%
Basic Medical Sciences	609	2.43%
Business Administration	3,417	13.62%
Clinical Sciences	1,740	6.93%
Dental Sciences	392	1.56%
Education	3,621	14.43%
Engineering	2,465	9.82%
Environmental Sciences	1,707	6.80%
Law	1,196	4.77%
Pharmacy	963	3.84%
Science	3,769	15.02%
Social Sciences	3,109	12.39%
Total	25,095	100.00%



UNDERGRADUATE STUDENTS ENROLMENT BY FACULTY (PART TIME) IN 2012/2013

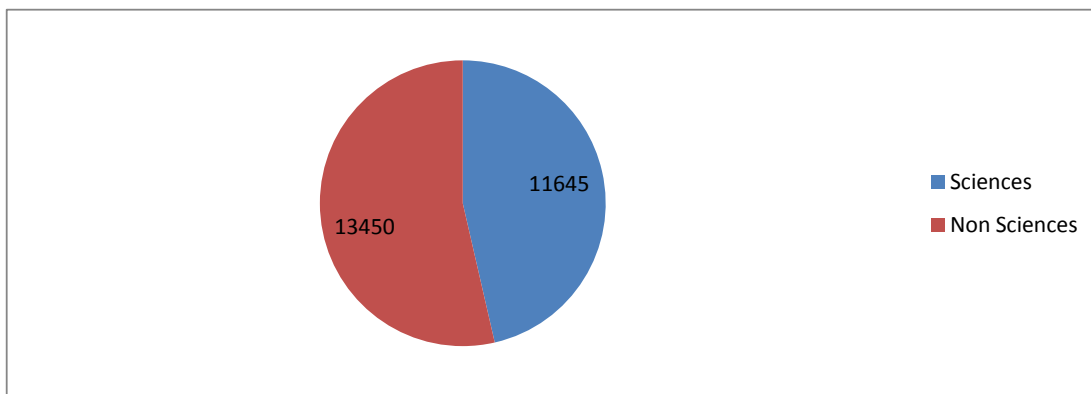
Faculty	TOTAL	PERCENTAGE
Arts	300	1.82%
DLI	14,093	85.31%
Education	1,599	9.68%
Environmental Sciences	302	1.83%
Social Sciences	226	1.37%
Total	16,520	100.00%

Part/Time Undergraduate Students



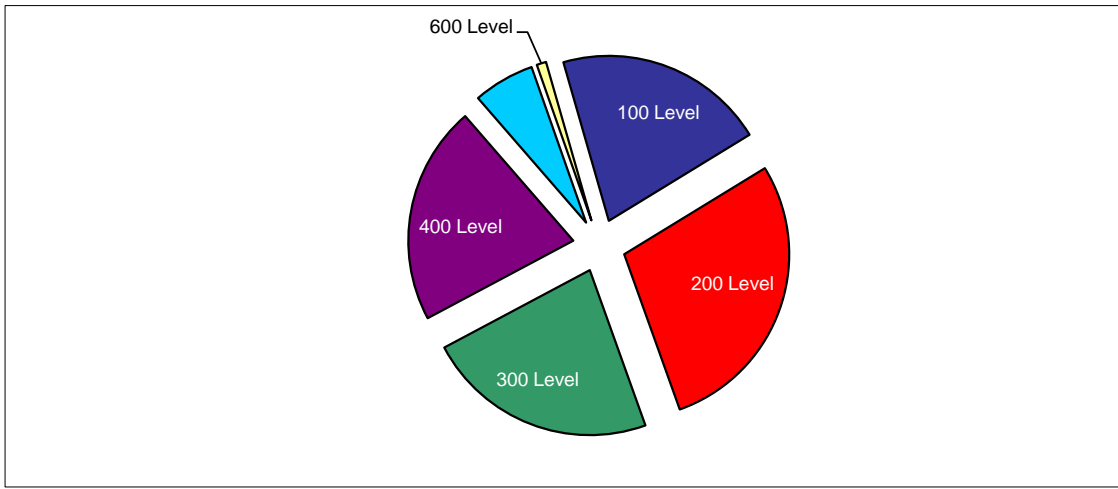
UNDERGRADUATE STUDENTS ENROLMENT BY DISCIPLINE (FULL TIME) IN 2012/2013

UNDERGRADUATE DISCIPLINE	TOTAL	PERCENTAGE
Sciences	11,645	46.40%
Non Sciences	13,450	53.60%
Total	25,095	100.00%



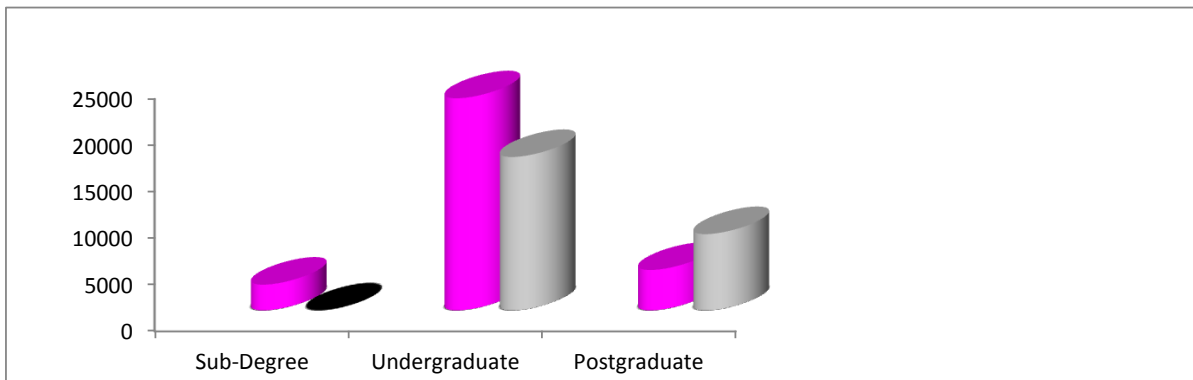
UNDERGRADUATE STUDENTS ENROLMENT BY LEVELS (FULL TIME) IN 2012/2013

LEVEL	TOTAL	PERCENTAGE
100 Level	5,196	20.71%
200 Level	7,093	28.28%
300 Level	5,694	22.70%
400 Level	5,371	21.41%
500 Level	1,508	6.01%
600 Level	233	0.93%
Total	25,095	100.04%



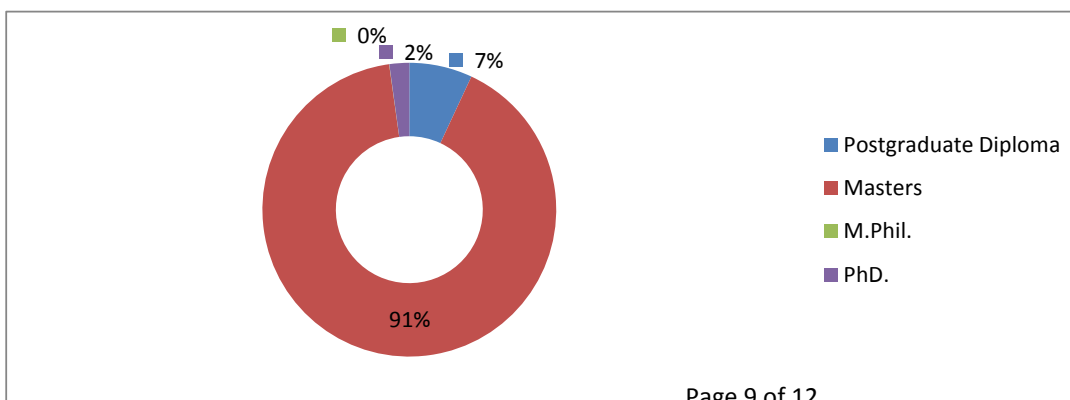
ALL STUDENTS BY MODE OF STUDY (FULL TIME AND PART TIME) IN 2012/2013

MODE OF STUDY	FULL TIME	PART TIME	TOTAL	PERCENTAGE
Sub-Degree	2,987	0	2,987	5.22%
Undergraduate	25,095	16,520	41,615	72.78%
Postgraduate	4,361	8,220	12,581	22.00%
Total	32,443	24,740	57,183	100.00%



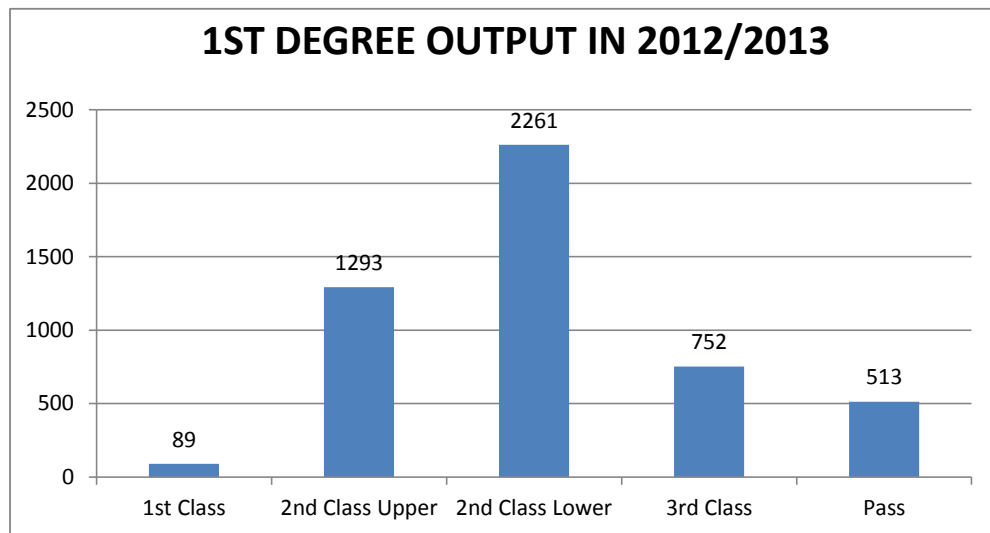
POSTGRADUATE STUDENTS' OUTPUT IN 2012/2013

CATEGORIES OF DEGREE	NUMBER OF GRADUATING STUDENTS	PERCENTAGE
Postgraduate Diploma	335	6.95%
Masters	4,380	90.85%
M.Phil.	1	0.02%
PhD.	105	2.18%
Total	4,821	100.00%



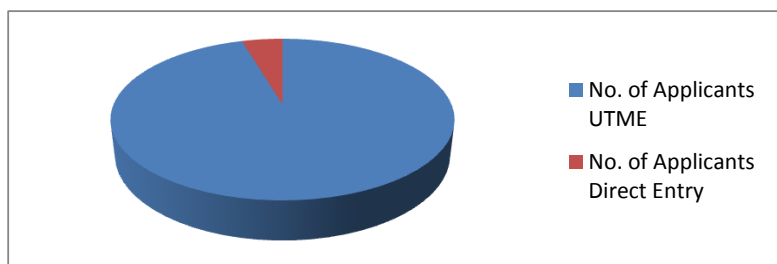
1ST DEGREE OUTPUT IN 2012/2013

CLASS OF HONOUR	NUMBER	PERCENTAGE
1st Class	89	1.81%
2nd Class Upper	1,293	26.34%
2nd Class Lower	2,261	46.07%
3rd Class	752	15.32%
Pass	513	10.45%
Total	4,908	100.00%

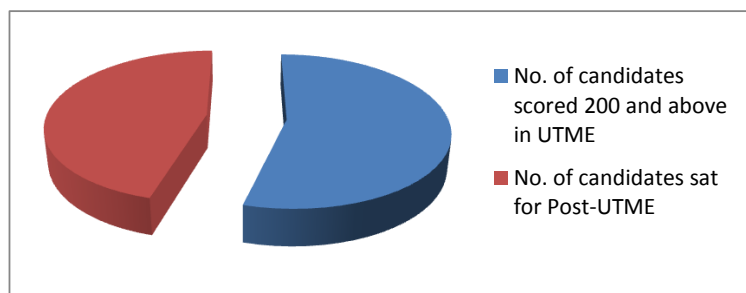


UTME AND DIRECT ENTRY STATISTICS FOR 2012/2013 ACADEMIC SESSION

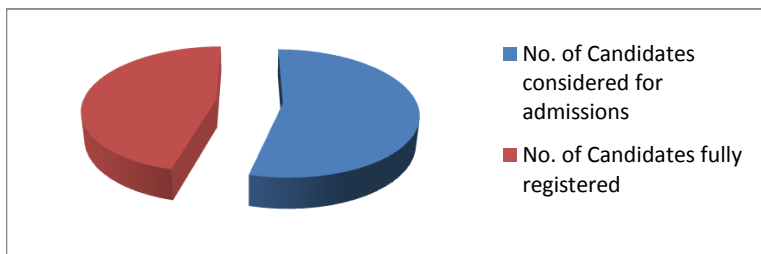
APPLICANTS	TOTAL
No. of Applicants UTME	83,866
No. of Applicants Direct Entry	4,021
Total	87,887



No. of candidates scored 200 and above in UTME	57,817
No. of candidates sat for Post-UTME	48,653

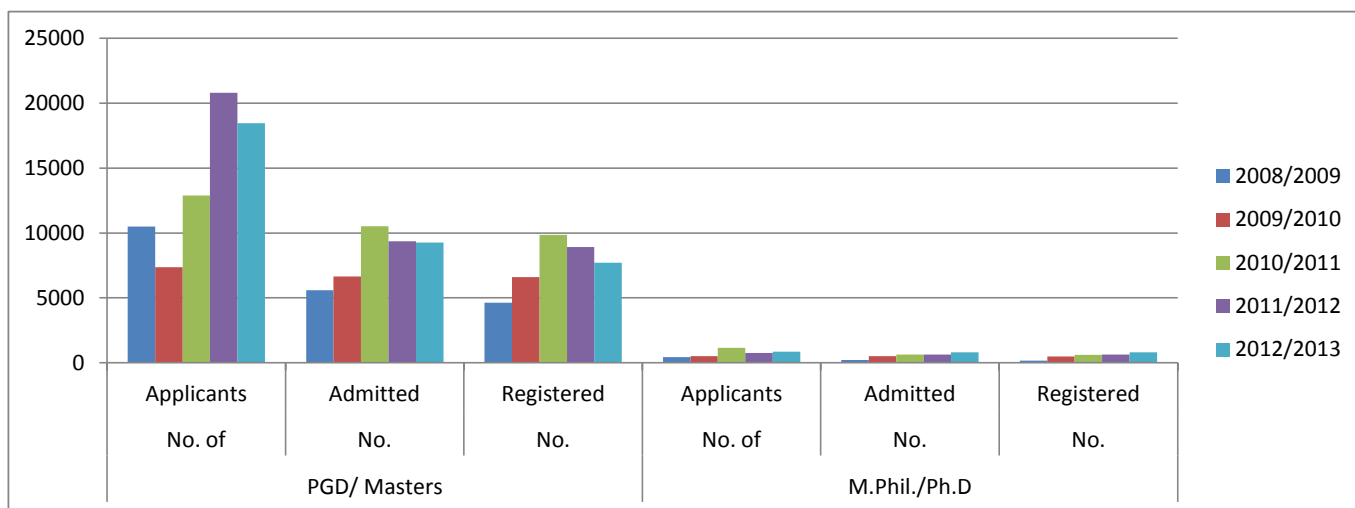


No. of Candidates considered for admissions	7,665
No. of Candidates fully registered	6,514



Postgraduate Applications, Admission and Enrolment Analysis from 2008/2009 to 2012/2013

Sessions	PGD/ Masters			M.Phil./Ph.D		
	No. of Applicants	No. Admitted	No. Registered	No. of Applicants	No. Admitted	No. Registered
2008/2009	10,495	5,599	4,628	450	210	166
2009/2010	7,370	6,655	6,600	520	515	485
2010/2011	12,892	10,520	9,845	1,150	630	609
2011/2012	20,806	9,350	8,912	760	644	630
2012/2013	18,458	9,255	7,717	850	805	800
Total	70,021	41,379	37,702	3730	2804	2690



CONVOCATION STATISTICS: CLASS COUNTS PER FACULTY IN 2012/2013 SESSION

FACULTY	IST CLASS	PERCENTAGE	CLASS UPPER	PERCENTAGE	CLASS LOWER	PERCENTAGE
Arts	1	1.12%	119	9.20%	308	13.62%
Business Administration	14	15.73%	179	13.84%	266	11.76%
Education	0	0.00%	109	8.43%	253	11.18%
Engineering	24	26.97%	139	10.75%	117	5.17%
Environmental Sciences	4	4.49%	75	5.80%	127	5.61%
Law	1	1.12%	73	5.65%	104	4.60%
Science	19	21.35%	156	12.06%	210	9.28%
Basic Medical Sciences	2	2.25%	20	1.55%	31	1.37%
Clinical Sciences	4	4.49%	11	0.85%	14	0.62%
Dental Sciences	0	0.00%	0	0.00%	0	0.00%
Social Sciences	4	4.49%	200	15.47%	333	14.72%
Pharmacy	8	8.99%	0	0.00%	0	0.00%
Distance Learning Institution	8	8.99%	212	16.40%	499	22.06%
TOTAL	89	100.00%	1,293	100.00%	2,262	100.00%

FACULTY	3RD CLASS	PERCENTAGE	PASS	PERCENTAGE
Arts	53	7.05%	1	0.19%
Business Administration	71	9.44%	6	1.17%
Education	56	7.45%	2	0.39%
Engineering	58	7.71%	6	1.17%
Environmental Sciences	39	5.19%	1	0.19%
Law	27	3.59%	4	0.78%
Science	99	13.16%	9	1.75%
Basic Medical Sciences	18	2.39%	3	0.58%
Clinical Sciences	9	1.20%	234	45.61%
Dental Sciences	0	0.00%	69	13.45%
Social Sciences	110	14.63%	8	1.56%
Pharmacy	0	0.00%	133	25.93%
Distance Learning Institution	212	28.19%	37	7.21%
TOTAL	752	100.00%	513	100.00%

